

Asbestos protection test



**ANTIGRAFITI
CENTAR**
d.o.o.

For further details related to any test
by Antigrafiti centar d.o.o., please contact us:
Web: www.antigrafiticentar.hr
Email: info@antigrafiticentar.hr
Telefon: +385915282649; +385916551673

ASBESTOS PROTECTION TEST

Test conducted by: LTM – LABORATORY FOR THERMALMEASUREMENTS d.o.o. Hrestovička bb. Zagreb R

Test report: No. 3081/09-1

Name of product: PROTECTIVE COATING FOR ASBESTOS SURFACES

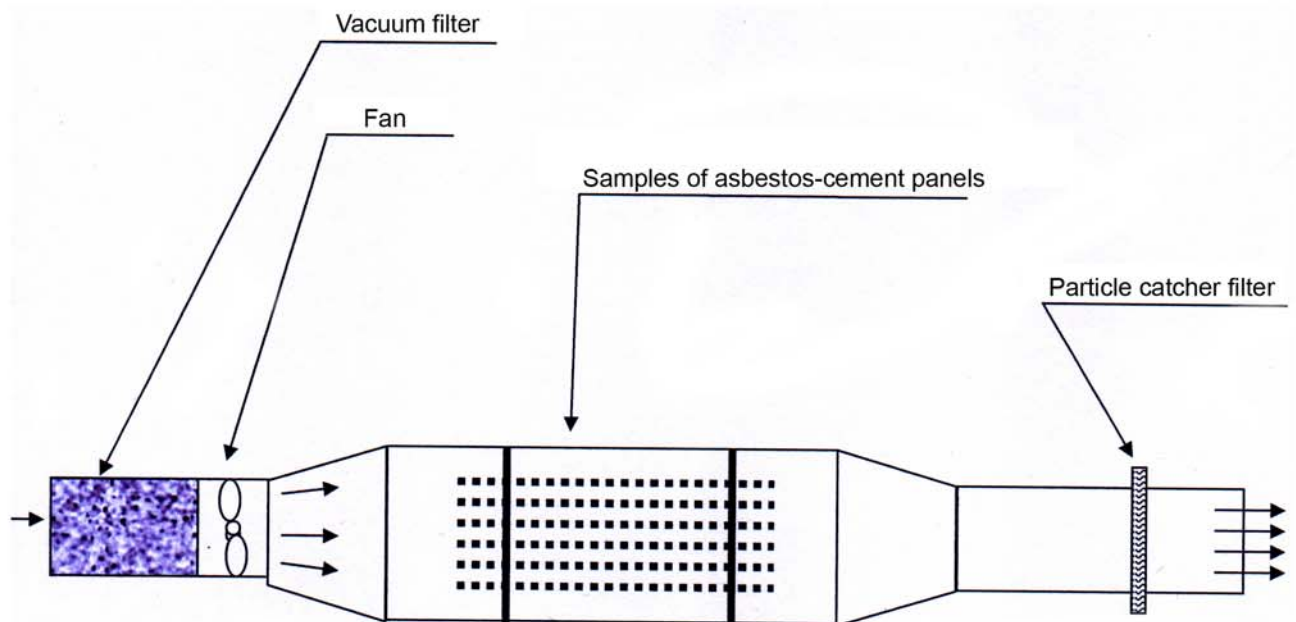
Producer: Urban Hygiene Ltd., Sky Business Park, Robin Hood
Airport, Doncaster, DN9 3GA GREAT BRITAIN

Type of product: easy on

Commissioned by: Antigrafiti centar d.o.o., II Cvjetno naselje 20, Zagreb

Tested samples: A asbestos-cement panel with protective coating
B asbestos-cement panel without coating

Testing method: The testing of the product was conducted by a comparative treatment under the same conditions for unprotected samples and coating protected samples to measure the emission of asbestos particles and erosion. The samples were exposed to an air stream at a speed of 8 m/sec within a 60 minute period in the chamber shown in the picture below.



The filters of A and B samples, packed in plastic foil and marked, were forwarded to the Ruđer Bošković Institute in Zagreb for testing and for an analysis to be made of the quantity of asbestos particles.

Asbestos protection test



**ANTIGRAFITI
CENTAR**
d.o.o.

For further details related to any test
by Antigrafiti centar d.o.o., please contact us:
Web: www.antigrafitocentar.hr
Email: info@antigrafitocentar.hr
Telefon: +385915282649; +385916551673

Institut Ruđer Bošković

BIJENIČKA 54, 10001 ZAGREB, HRVATSKA
TEL.: 01 45-61-111, FAX: 46-80-084, www.irb.hr

“Ruđer Bošković” Institute
Division of Materials Chemistry
Bijenička cesta 54
P.p. 180, 10002 Zagreb

Antigrafiti centar
2 Cvjetno naselje 20
10000 Zagreb
Nikola Ančić, BSc (Eng.)
Company reg. no. 228-6688



Subject matter: Identification of asbestos fibres through FE SEM and EDS analysis

REPORT

Tough scanning electron microscopy (FE SEM) and energy dispersive X-ray spectroscopy (EDS), asbestos fibres were identified on 2 unprotected samples (sample no. 2 and sample no. 3). The chemical composition shows the presence of white or chrysotile asbestos. In addition to asbestos fibres, the above samples also contained dust particles of various origins (sulphur and phosphorus indicate the presence of micro-organisms or insect remains, while the presence of aluminium, silicon and iron can be related to dust of inorganic origin, such as earth, clay, sand, etc.). Furthermore, asbestos as a pollutant may also contain small quantities of other minerals. On unprotected sample no. 1, only traces of clay were found, while the presence of asbestos fibres was not proven. All three protected samples (nos. 1, 2 and 3) contained no traces of any type of dust.

Mira Ristić, DSc

Mira Ristić

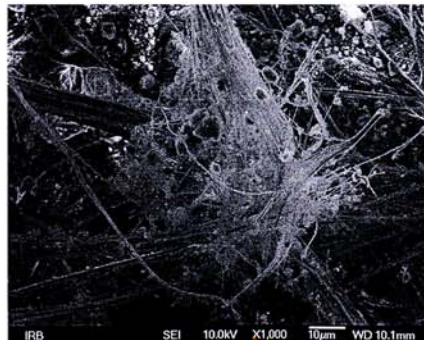
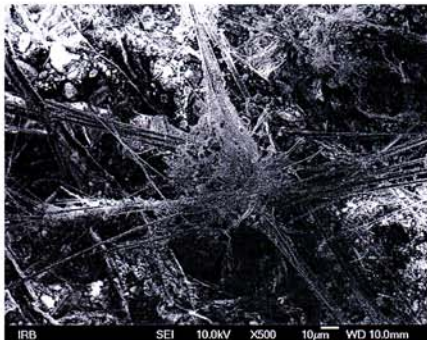
Enclosed: CD with measurement results

Zagreb, 8 May 2009

Svetozar Musić, DSc

Svetozar Musić

Head of the Division of Materials Chemistry



Electronic microscope photograph of asbestos particles on filters from unprotected samples

Conclusion: The report on the identification of asbestos fibres by FE SEM and EDS analysis confirms that easy on – Asbestos Sealer applied as a coating on asbestos surfaces fully prevents the emission of asbestos fibres into the environment and permanently protects the material against erosion.

easy on - Asbestos Sealer